

Beautiful Minds

50 People with mental illnesses

May 8 - June , 2021

Demystifying the stigma though the ARTs @ dA

Featured Artist:
Dan Joyce

Curator:
Chloe Tang

Dan Joyce, Artist and Mental Health Advocate

BACKGROUND AND PHILOSOPHY

I started my career in a boarding home in Pasadena in 1996. I didn't have any money, and the owner encouraged me to sit on the corner and try and sell my art. I sold work that same day.

Here you'll find my watercolors. My oil paintings. My books. My music. My videos. I have a calendar for upcoming releases and events and don't forget to sign the guestbook!

I've have had an extraordinary life. One of my gifts is that I'm comfortable sharing the darkest places with others.

Take my hand and let's walk together.

I have an Associate of Arts Degree in Business, a certificate in Computer Graphics, and a Bachelor's Degree in Fine Arts, specializing in graphic design and illustration.

I also studied abroad in Florence, Italy. My paintings have been featured in galleries and museums all over Southern California: Green Door Gallery, McClain's Coffeehouse, West End Gallery, Bowers Museum, a studio/gallery I started with Bill Reid in the Spurgeon Building, AvantGarden Gallery, as well as several spaces in Magoski Arts Colony and Chinatown.

I've published eleven illustrated journals/poetry books and am currently working on screenplays for them. Bus Stop Talk is my most popular title.

This page is dedicated to my late father, whose love and support helped build my career.

I consider myself a transcendental painter, creating from my subconscious. All my work is about me. I know that sounds egotistical, but it isn't; an artist captures what he/she knows. I do well when I take my time, but I find it more challenging to paint rapidly, capturing a subject or image's raw emotional quality. I am also very prolific. Whether a painting, a poem, a song or a video, I do something creative everyday.

Inspirations: Mental health, sobriety, existentialism, and world religions.

Artistic Influences: Music. People. Color. Love. Modern Art History. Jackson Pollack's action painting. Rapid painting. Andy Warhol's mechanical drawings. Vincent Van Gogh. Marciano and Richard Martinez (teachers/mentors). Technology.

Musical Influences: Miles Davis. John Lennon. Tupac Shakur. Bob Dylan. Johnny Cash. Carlos Santana. The Ramones.

Writing Influences: James Joyce and stream of conscious. Oscar Wilde. Joseph Conrad. Ernest Hemingway. Maya Angelo. Charles Bukowski. Sylvia Plath. Walt Whitman. Allen Ginsberg. Tennessee Williams.

I am somewhere separate from the norm of the society, documenting what I am doing and going through, whether it is in a hospital, a boarding home, or homeless, anywhere where I am basically feeling alienated or isolated. I feel my philosophy is more dynamic than static: it is ever-changing as I grow.

I am an advocate for Mental Health Awareness and a strong believer in medications and therapy. I believe the illness enhances talent in some people. Most artists have a cause they represent; this is mine.

Learn more about Dan at <https://danjoyceart.com>

Curator's Statement :

Beautiful Minds: 50 people with mental illness (2021) is a solo show of Dan Joyce. The works in this series celebrate many artists who have struggled with mental illnesses throughout their lives. The exhibit hopes to reduce the stigma of mental illnesses and let others understand how common these illnesses are. While the exhibit is mostly shown during May, the month of mental health awareness, it doesn't mean that this is the only month of the year that people should care about mental health. Rather, this should be a start up for raising awareness and be more understanding of one another. **Chloe Tang**

Artists



Jackson Pollock: Bipolar Disorder 2014

Watercolor on paper
22x33

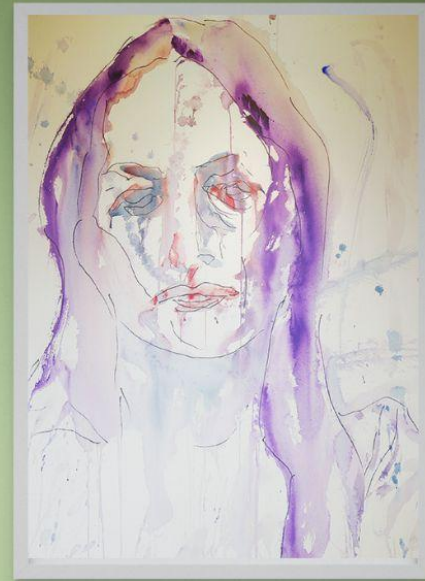
Portrait of Jackson Pollock, who suffered from bipolar disorder.



Michelangelo: High Functioning Autism 2014

Watercolor on paper
22x33

Portrait of Michelangelo, who suffered from high functioning autism.



Georgia O'Keeffe: Clinical depression 2014

Watercolor on paper
22x33

Portrait of Georgia O'Keeffe, who suffered from clinical depression.



Vincent van Gogh: Clinical Depression; Bipolar Disorder 2014

Watercolor on paper

22x33

Portrait of Vincent van Gogh, who was under speculation of suffering clinical depression and bipolar disorder (speculated).

Fitness Guru
Athlete



Richard Simmons: Anorexia Nervosa, Bulimia Nervosa 2014

Watercolor on paper
22x33

Portrait of Richard Simmons, who suffered from anorexia nervosa and bulimia nervosa.



Terry Bradshaw: Clinical Depression 2014

Watercolor on paper
22x33

Portrait of Terry Bradshaw, who suffered from clinical depression.

Writers

Poets

Journalists



**Leo Tolstoy Clinical Depression; Hypochondriasis;
Alcoholism; Substance Abuse 2014**

Watercolor on paper
22x33

Portrait of Leo Tolstoy, who suffered from clinical depression,
hypochondriasis, alcoholism and substance abuse.



Sylvia Plath: Clinical Depression 2014

Watercolor on paper
22x33

Portrait of Sylvia Plath, who suffered from clinical depression.



Virginia Woolf: Bipolar Disorder 2014

Watercolor on paper
22x33

Portrait of Virginia Woolf, who suffered from bipolar disorder.



Plato: Depression 2014

Watercolor on paper
22x33

Portrait of Plato, who suffered from depression (as noted by Aristotle).



Bill Wilson: Alcoholism, Depression 2014

Watercolor on paper
22x33

Portrait of Bill Wilson, who suffered from alcoholism and depression.



**Charles Dickens: Clinical Depression;
Bipolar Disorder 2014**

Watercolor on paper
22x33

Portrait of Charles Dickens, who suffered from clinical depression and
bipolar disorder (suspected).



Hunter S. Thompson: Substance Abuse, Suicide 2014

Watercolor on paper
22x33

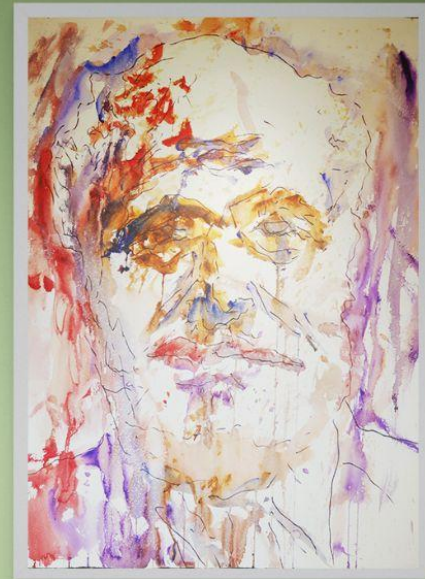
Portrait of Hunter S. Thompson, who suffered from substance abuse and suicidal.



Edgar Allan Poe: Clinical Depression, Alcoholism 2014

Watercolor on paper
22x33

Portrait of Edgar Allan Poe, who suffered from clinical depression and alcoholism (speculated).



Ernest Hemingway: Clinical Depression 2014

Watercolor on paper
22x33

Portrait of Ernest Hemingway, who suffered from clinical depression.

Performers



Audrey Hepburn: Clinical Depression, Eating Disorders 2014

Watercolor on paper
22x33

Portrait of Audrey Hepburn, who suffered from depression and eating disorders.



Adam Ant (Stuart Goddard): bipolar disorder 2014

Watercolor on paper
22x33

Portrait of Adam Ant, who suffered from bipolar disorder.



Axl Rose: Bipolar Disorder 2014

Watercolor on paper
22x33

Portrait of Axl Rose, who suffered from bipolar disorder.



Billy Joel: Alcohol, Depression 2014

Watercolor on paper
22x33

Portrait of Billy Joel, who suffered from alcoholism and depression.



Brooke Shields: Postpartum Depression 2014

Watercolor on paper
22x33

Portrait of Brooke Shields, who suffered from postpartum depression.



Ludwig van Beethoven: Bipolar Disorder 2014

Watercolor on paper
22x33

Portrait of Ludwig van Beethoven, who suffered from bipolar disorder.



Catherine Zeta Jones: Bipolar II 2014

Watercolor on paper
22x33

Portrait of Catherine Zeta Jones, who suffered from bipolar II.



David Bowie: Not diagnosed 2014

Watercolor on paper
22x33

Portrait of David Bowie, who was not diagnosed but had lots of family mental health issues.



Daniel Johnston: Bipolar Disorder 2014

Watercolor on paper
22x33

Portrait of Daniel Johnston, who suffered from bipolar disorder.



Francis Ford Coppola: Bipolar Disorder 2014

Watercolor on paper
22x33

Portrait of Francis Ford Coppola, who suffered from bipolar disorder.



Dick Cavett: Depression 2014

Watercolor on paper
22x33

Portrait of Dick Cavett, who suffered from depression.



Drew Carey: Clinical Depression 2014

Watercolor on paper
22x33

Portrait of Drew Carey, who suffered from clinical depression.



Frank Sinatra: Bipolar Disorder 2014

Watercolor on paper
22x33

Portrait of Frank Sinatra, who suffered from bipolar disorder (speculated).



Janis Joplin: Bipolar Disorder 2014

Watercolor on paper
22x33

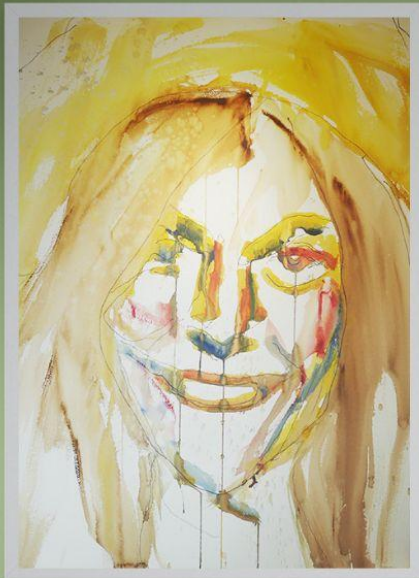
Portrait of Janis Joplin, who suffered from bipolar disorder.



Jonathan Winters: Bipolar Disorder 2014

Watercolor on paper
22x33

Portrait of Jonathan Winters, who suffered from bipolar disorder.



Karen Carpenter: Anorexia Nervosa 2014

Watercolor on paper
22x33

Portrait of Karen Carpenter, who suffered from anorexia and nervosa.



Kurt Cobain: Attention Deficit Disorder,

Bipolar, Depression 2014

Watercolor on paper
22x33

Portrait of Kurt Cobain, who suffered from attention deficit disorder and bipolar depression.



Marilyn Monroe: Clinical Depression, Suicide 2014

Watercolor on paper
22x33

Portrait of Marilyn Monroe, who suffered from clinical depression and was suicidal.



Marlon Brando: Emotional Disorders 2014

Watercolor on paper
22x33

Portrait of Marlon Brando, who suffered from emotional disorders.



**Robin Williams: Clinical Depression,
Learning Disability 2014**

Watercolor on paper
22x33

Portrait of Robin Williams, who suffered from clinical depression and learning disability.



Patty Duke: Bipolar Disorder 2014

Watercolor on paper
22x33

Portrait of Patty Duke, who suffered from bipolar disorder.



**Roseanne: Dissociative Identity Disorder,
Obsessive-compulsive Disorder,
Clinical Depression, Agoraphobia 2014**

Watercolor on paper
22x33

Portrait of Roseanne, who suffered from dissociative identity disorder, o
bsessive-compulsive disorder, clinical depression and agoraphobia.



Russell Brand: Bipolar Disorder 2014

Watercolor on paper
22x33

Portrait of Russell Brand, who suffered from bipolar disorder.



Tennessee Williams: Clinical Depression 2014

Watercolor on paper
22x33

Portrait of Tennessee Williams, who suffered from clinical depression.



Vivien Leigh: Bipolar Disorder 2014

Watercolor on paper
22x33

Portrait of Vivien Leigh, who suffered from bipolar disorder after miscarriage.

Other Public Figures



Bill Wilson: Alcoholism, Depression 2014

Watercolor on paper
22x33

Portrait of Bill Wilson, who suffered from alcoholism and depression.



Abbie Hoffman: Bipolar Disorder 2014

Watercolor on paper
22x33

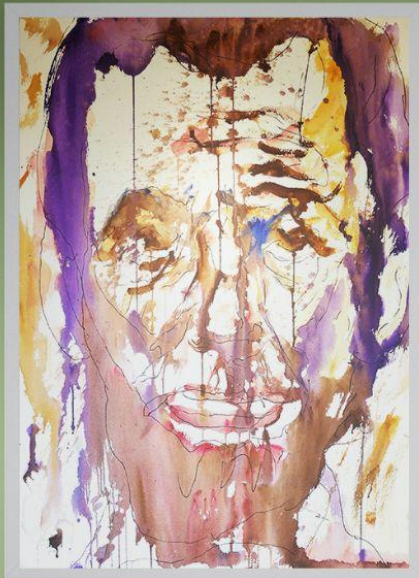
Portrait of Abbie Hoffman, who suffered from bipolar disorder (speculated).



Howard Hughes: OCD 2014

Watercolor on paper
22x33

Portrait of Howard Hughes, who suffered from OCD while under speculation of clinical depression and psychosis.



Abraham Lincoln: Severe Clinical Depression 2014

Watercolor on paper
22x33

Portrait of Abraham Lincoln, who suffered from severe clinical depression.



Buzz Aldrin: Clinical Depression 2014

Watercolor on paper
22x33

Portrait of Buzz Aldrin, who suffered from clinical depression.



Isaac Newton: Bipolar Disorder 2014

Watercolor on paper
22x33

Portrait of Isaac Newton, who suffered from bipolar disorder (suspected).

Fin.